

Polstitches Designs

Temptress



Hardanger with Pulled Thread work

Please note

Every square on main chart = 1 fabric threads

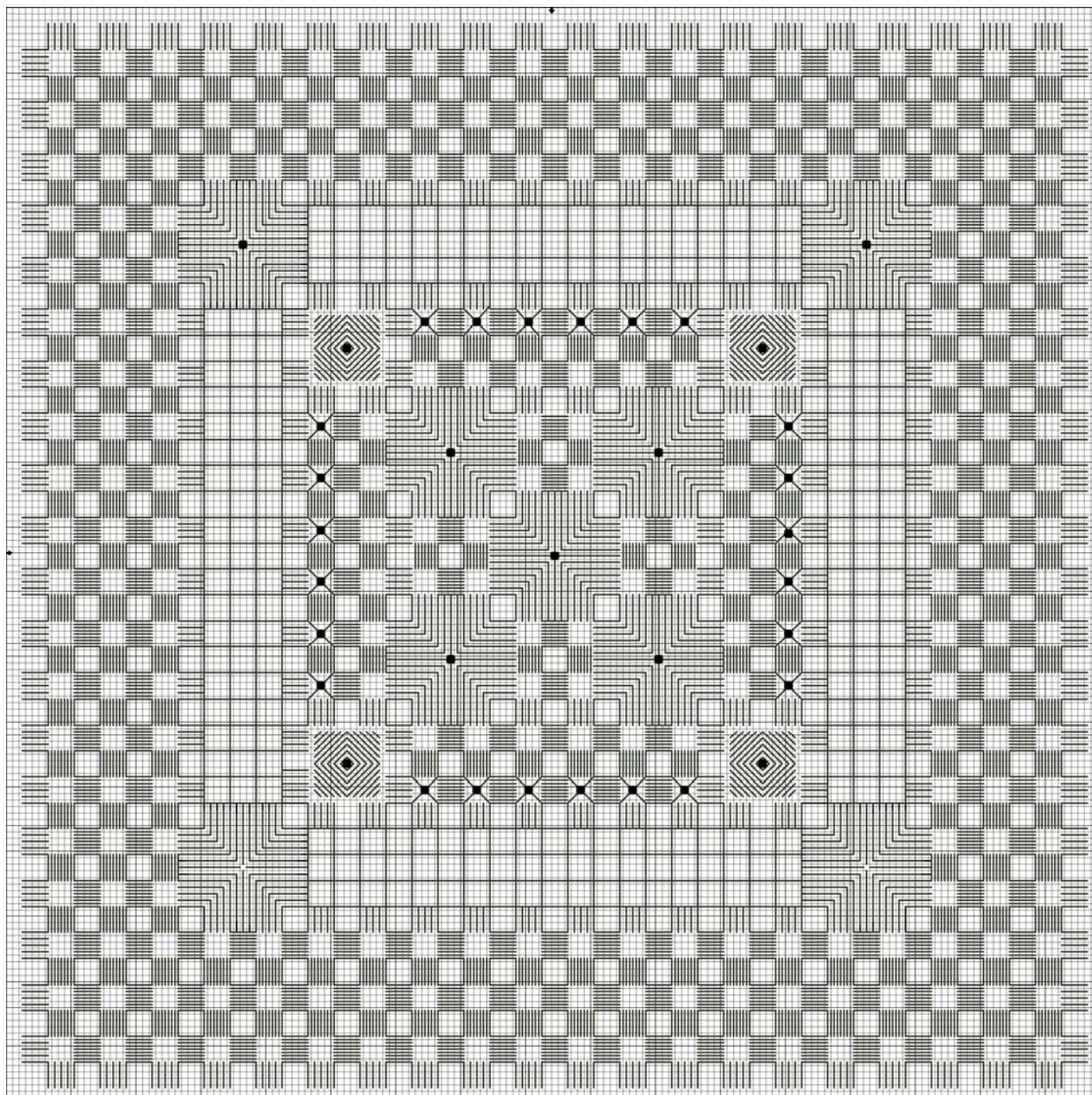
This chart is free to download for your personal enjoyment which means you are welcome to photocopy it and stitch it as often as you wish. Needlework shops are free to distribute this chart to their customers and classes as they wish.

It is also available to stitchers that stitch for charity.

This chart must not be sold or profit made from it, other than for charitable means.

Enjoy
Jo

Polstitches Designs



Please note

Every square on main chart = 1 fabric threads

Tools required for design

Frame

Hardanger Scissors (Which make the cutting process much easier)

Needle size 24 Beading Needle for Beads

Tweezers (for thread removal if preferred)

Recommended stitching materials

13 x 13 inches Polstitches Pearl 28 ct Jobelan

15 metres x of Polstitches Pearl Perle no 8

20 Metres x Polstitches Pearl Perle No 12

15 Metres x Polstitches Fairy Footprints Perle No 8

Round 2.5mm white pearls or beads x 33

Stitched Size on 28ct Jobelan

14.25cms x 14.25cms

5.6 x 5.6 Inches



Every effort has been taken to ensure the accuracy of the enclosed chart and instructions. Unfortunately, we cannot be held responsible for human error, printing mistakes or differences in an individual's stitching.

Model was stitched by Polstitches Designs
© Polstitches Designs 2005

Stitching Instructions

Tools required for design

The Stitching key is for identification of stitches only, for correct working and placement of stitches refer to main chart.

